



## SAP GUI

Under Our Third-Party Support Delivery Model

*June 2018*

## **COPYRIGHT**

© 2018 Spinnaker Support, LLC - all rights reserved.

## **Disclaimer**

The information provided in this White Paper is based on market research and on the perspectives and opinions of Spinnaker Support and is presented for information and discussion purposes only. None of the information contained herein should be construed as the provision of legal advice and should not be used as a substitute for obtaining legal advice from an attorney. The information contained herein is subject to change, no part of this draft document is legally binding or enforceable. Please do not copy or disseminate this White Paper without including this disclaimer.

## Table of Contents

1.1	Introduction.....	4
1.2	SAP GUI .....	4
1.3	SAP GUI and SAP Business Client in S/4HANA .....	6
1.4	Platform Support and Maintenance Strategy.....	6
1.5	Installation Options for SAP GUI Windows.....	7
1.6	List of Component Groups.....	8
1.7	New Features with SAP GUI .....	8
1.8	2.0 Microsoft Office Integration .....	9
1.9	Front-End SAP GUI Printing .....	11
1.10	Conclusion.....	11
1.11	About Spinnaker Support.....	12

## 1.1 Introduction

SAP GUI is an SAP's client software used to access SAP applications such as - SAP ERP, SAP Business Suite, etc. In a three-tier architecture, SAP GUI is the client installed in Local PC on a company's network to remotely access the central SAP Server.

The Fundamentals of SAP GUI:

### Separation of user Interfaces and SAP System

- Changes in the GUI do not affect business rules and logic
- Business Data reside in the back end system

### Why are there multiple GUIs for the same applications?

- Different Client Operating Systems
- Different user experience
- Different tasks
- Different environments

## 1.2 SAP GUI

The SAP GUI comes in the following three different options:

### Windows

SAP GUI for Windows is SAP's standard client on the Microsoft Windows platform for all SAP applications. SAP GUI for Windows is based on ActiveX (controls) technology and works like any browser. SAP GUI displays the information and allows a high level of user interactivity (including Office Integration).



Fig. 1. SAP GUI for Windows

## Java

GUI for Java runs on a variety of platforms including Windows, Mac OS X, Linux, and UNIX platforms. SAP GUI for the Java Environment is based on Java and C/C++ running with the same codebase across all platforms.

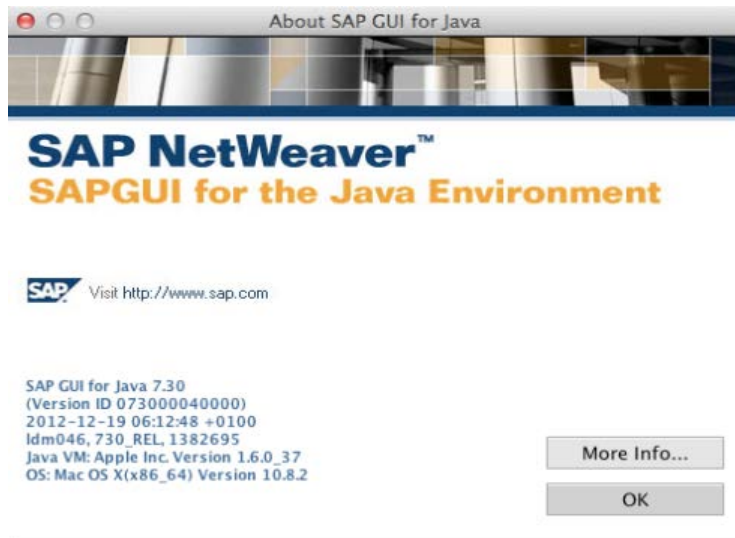


Fig. 2. SAP GUI for the Java Environment

## HTML

SAP GUI for HTML maps SAP screens to HTML pages. SAP Internet Transaction Server (ITS) which is fully integrated into the kernel of the SAP Web Application Server is the basis for SAP GUI for HTML.

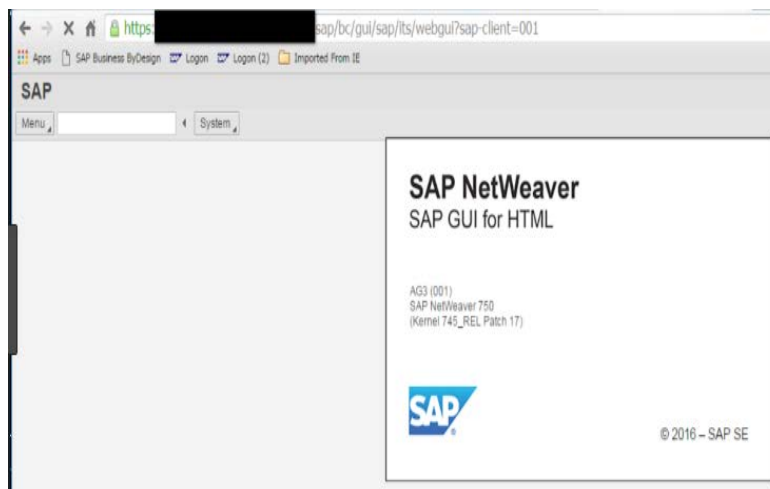


Fig. 3. SAP GUI for HTML

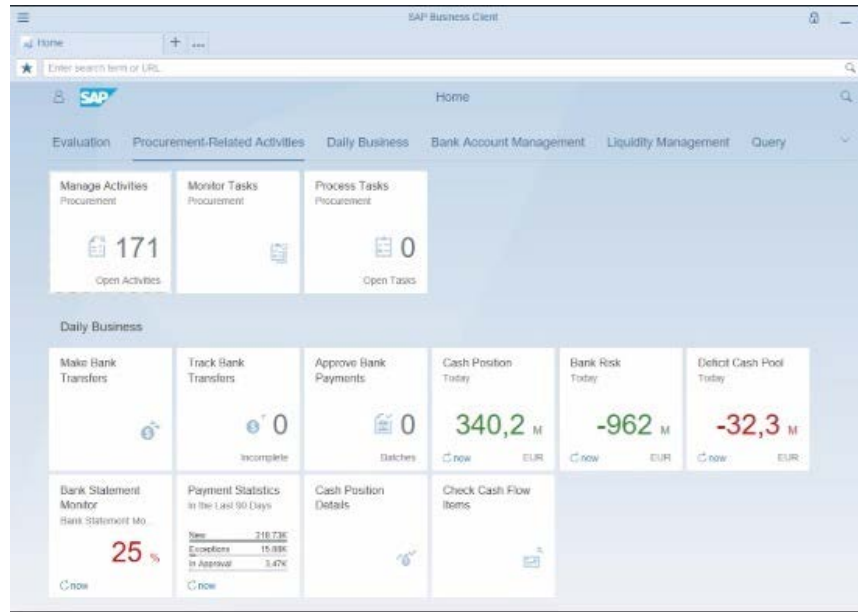
### 1.3 SAP GUI and SAP Business Client in S/4HANA

Client Options for SAP S/4HANA:

- SAP Fiori Launchpad in Browser (no local client)
- SAP Fiori Launchpad in SAP Business Client (local client)

Client Options for SAP S/4HANA Cloud:

- Fiori Launchpad in Browser
- SAP Business Client 6.5 – Embedding Scenarios
- Fiori Launchpad and Fiori apps on a dedicated tab
- SAP GUI for Windows 7.50



Availability of SAP Fiori visual theme “Belize”:

- SAP GUI for HTML
- S/4 HANA 1610 / Cloud 1608
- SAPGUI for Windows
- SAP GUI for Windows 7.5 (\*)
- Web Dynpro ABAP
- NetWeaver 7.51 / SAP\_UI 7.51
- SAP Business Client
- SAP Business Client 6.5 (\*)

### 1.4 Platform Support and Maintenance Strategy

SAP GUI for Java/Windows is “**downward compatible**” which means latest versions of SAP GUI can work with other pre-existing SAP products starting with R/3 up to the latest versions but sometimes may have limited features and functionality based on the SAP GUI version deployed.

The below diagram depicts the different SAP GUI versions and the SAP platform strategy.

	SAP GUI for Windows	SAP GUI for Java	SAP GUI for HTML
Windows platforms/browser	✓	✓	Internet Explorer, Mozilla Firefox, Google Chrome, Microsoft Edge
Supported platforms/browser	VMWare products, Terminal Server, Citrix Metaframe, Microsoft App-V, Citrix XenApp / XenDesktop	✓	Mozilla Firefox on Linux / Mac OS
Platform List	Windows 7, 8.1, 10, Server2008, Server2008R2, Server2012, Server2012R2, Server2016	Windows, Linux, Mac OS X and Linux Selection *Java 8 is required	Server platforms: Windows / Linux

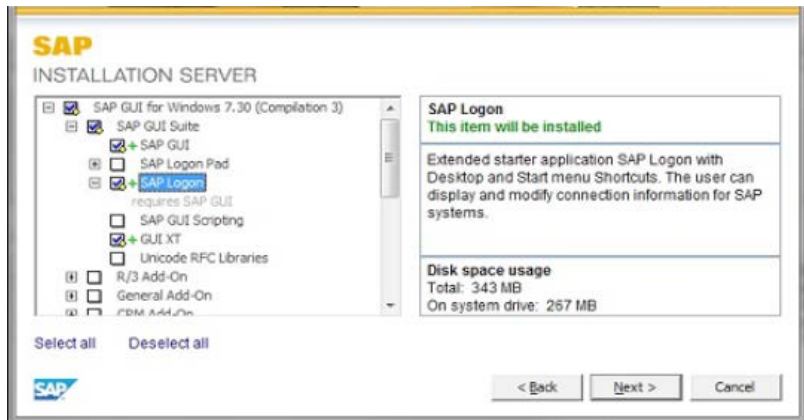
Microsoft Office Support:

- SAP GUI for Windows 7.30 patch 7 can support 64-bit version of the Microsoft Office for SAP Desktop Office Integration
- SAP GUI for Windows 7.40 patch 5 can support Microsoft Office 2016
- Since Microsoft Office 365 ProPlus (msi or Click2Run) installs Office 2013 or Office 2016, it is also supported in the same way

## 1.5 Installation Options for SAP GUI Windows

A. Workstation installation from a server:

All the necessary files are copied from the installation server to the clients, and the installation of the SAP front-end software is pushed out to many different clients from the server.



B. Workstation installation from a distribution medium such as a DVD:

Installation is performed on every PC using the same distribution medium like DVD.



### Installation Notes:

- For Installation of SAP GUI Java make sure you have installed a supported Java Virtual Machine (JVM) and the necessary runtime libraries.
- Installation of SAP GUI Java also has the same installation options as SAP GUI for Windows.
- Make sure to check Hardware and Software requirements before the installation.
- Please refer to installation guide of the SAP GUI version before beginning the installation.

## 1.6 List of Component Groups

Please be informed that there are new components which are added and deleted with every new version of SAP GUI. A select list of features and functions of the selectable components and the prerequisites for installing them are listed below.

Please refer to the install guide of SAP GUI for the components supported for the version.

Group	Description
SAP NetWeaver Business Client	Installs the SAP NetWeaver Business Client.
SAP GUI Suite	SAP GUI for Windows along with all the necessary sub-components
Install SAP GUI Desktop Icon/Shortcuts even when NWBC is installed	When you want to use SAP GUI and NWBC in parallel, you can select this component to install the SAP Logon (Pad) Desktop Icon and to register SAP GUI shortcuts to SAP Logon.
R/3 Add-On	Front-end add-on for SAP R/3 Enterprise
General Add-On	Front-end add-on that can be used to extend the functionality of SAP systems and that is not restricted to one SAP Component
Legacy Components	Components for deployment with older SAP releases (SAP R/3 4.6 and lower) or old Office products (Excel 95, ...).
CRM Add-On	Front-end add-on for SAP Customer Relationship Management (CRM)
KW Add-On	Front-end add-on for SAP Knowledge Workhouse.
SCM Add-On	Front-end add-on for of SAP Supply Chain Management (SCM)
SEM Add-On	Front-end add-on for SAP Strategic Enterprise Management (SEM)
SAP Screenreader Extensions (SRX)	SAP GUI Screen Reader Extensions (SRX) enable the use of SAP GUI together with the screen reader program Jaws for Windows.
SNC Client Encryption	<a href="#">SNC Client Encryption</a> enables users to protect communication between SAP GUI for Windows and SAP NetWeaver Application Server (AS) ABAP.
Business Explorer	The Business Explorer is the SAP Business Information Warehouse component that provides flexible reporting and analysis tools for strategic analyses and decision-making support within a company. These tools include query, reporting, and analysis functions

## 1.7 New Features with SAP GUI

### SAP GUI Scripting:

SAP GUI Scripting is an automation interface that used for macro recording and playback, development of test tools and application integration.

### Standalone SAPConsole:

SAPConsole is used to support different types of output devices which supports character-cell terminals, including radio frequency (RF) devices as well as web-equipped devices.



## SAP Screen Personas:

SAP Screen Personas is used to improve user productivity by personalizing SAP Dynpro transactions and Web Dynpro applications in ECC, Business Suite on HANA, and SAP S/4HANA.

For more information about SAP Screen Personas check their product page - [www.sapscreenpersonas.com](http://www.sapscreenpersonas.com)

## GuiXT:

GuiXT is used to simplify transactions without having to modify them. We can hide screen elements or add screen elements.

## 1.8 2.0 Microsoft Office Integration

UI element OfficeControl is used to integrate applications created with Microsoft Office into Web Dynpro ABAP which enhances it with new components. These new components are implemented with Microsoft Office and run on the local client PC or browser.

There are various technical possibilities of how an application can use Office products. It should be determined first which of these possibilities is the preferred method.

Below are the supported Microsoft Office products:

- Microsoft Excel documents in Microsoft binary format with the extension `xls`.
- Microsoft Project documents with the extension `mpp`.
- Microsoft Word documents in Microsoft binary format with the extension `doc`.

### Office connection with Desktop Office Integration(DOI):

Supported Microsoft Office products: Microsoft Word, Microsoft Excel, Microsoft PowerPoint, Microsoft Visio.

Not-supported Microsoft Office products: Microsoft Access or Microsoft Outlook, Office Viewer applications (Excel Viewer, Word Viewer, PowerPoint Viewer, and Visio Viewer).

MICROSOFT PRODUCT	SAP GUI VERSION
Microsoft Visio 2013 & Visio 2016	From patch level of SP14 for SAP GUI 7.10
Microsoft Visio 2013 & Visio 2016	From patch Level 6 of SAP GUI for Windows 7.40 and patch Level 0 of SAP GUI for Windows 7.50.
Microsoft Office 2016 (32 bit)	From patch level 5 of SAP GUI for Windows 7.40
Microsoft Office 2013 (32 bit)	From patch level 3 of SAP GUI for Windows 7.30
Microsoft Office 2016 (64 bit)	From patch level 5 of SAP GUI for Windows 7.40
Microsoft Office 2013 (64 bit)	From patch level 7 of SAP GUI for Windows 7.30
Microsoft Office 2010	From SAPGUI 7.20 (32-bit)

### Office support for components integrated into SAP GUI for Windows:

C. SAP Office MAPI Service Provider:

- Client software no longer support SAP software components based on NetWeaver '04 or the SAP Web Application Server Release 6.40 or above.

## D. Knowledge Workbench / Knowledge Translator

Microsoft Products	SAP BACK-END	SAP FRONT-END
Microsoft Windows XP / Microsoft Office XP	KW5. 2 (4.6D): BAS of Support Package 30  KW6. 0 (6.20): BAS Support Package 16	SAP GUI Releases 4.6D  and 6.20
Visio 2000	46D: KW50_59 SAP KW 5.0 Add- on Patch	6.20: KW52_3 SAP KW5.2/6.0 Add-On Support Package of the 07.03.03 Support Package 3 (or higher)

## E. SEM Add-ons:

- MS Office 97 (SR1)
- MS Office 2000
- MS Office XP
- MS Office 2003

## F. MS Outlook Calendar Integration:

- The following combination is supported for MS Outlook Calendar Integration - Windows 2000 or Windows XP, Office XP, SAPGUI 6.20 Patch Level 25 and higher.

## G. Office support in SAP BW/BI

- SAP NW BW 7.0 Front End Add-On (of SAP Netweaver 7.0)
- SAP NW 7.0 BI for SAP GUI 7.50 is supported and available since 10th of May 2017.
- SAP NW 7.0 BI for SAP GUI 7.40 is supported and available since 8th of October 2014.

SAPGUI Version	OS	Browser	Office
7.30	Windows Vista	min. IE 7.0	2007 and 2010 (32-bit)
7.30/7.40/7.50	Windows 7	IE 8.0 or higher	2007, 2010, 2013 and Office 365
7.30/7.40/7.50	Windows 8	IE 10 or higher	2010, 2013 and Office 365 (32-bit)
7.30/7.40/7.50	Windows 8.1	IE 10 or higher	2013 (32-bit) and Office 365
7.30/7.40/7.50	Windows 10	IE 11 or higher	2013, 2016 and Office 365
7.30/7.40/7.50	Windows Server 2003	IE 8 or higher	2007 and 2010 (32-bit)
7.30/7.40/7.50	2007 and 2010(32 Bit)	IE 7 or higher	2007 and 2010 (32-bit)
7.30/7.40/7.50	Windows Server 2008 R2	IE 8 or higher	2007 and 2010 (32-bit)
7.30/7.40/7.50	Windows Server 2012	IE 8 or higher	2013 (32-bit)
7.40/7.50	Windows Server 2012 R2	IE 11	2013 (32 Bit)
7.40/7.50	Windows Server 2016	IE 11	2016 (32 Bit)

\* Office 64 bit versions are NOT currently supported for BEx tools.

## 1.9 Front-End SAP GUI Printing

You can also access a print server using the network, or you can print directly from the SAP GUI.

### Front-end Printing (SAP GUI for Windows/Java)

- SAP GUI for Windows
- SAP GUI for Java (on MS Windows only)

When printing from the SAP System, front-end printing lets you access printers that are not defined in the R/3 spool system. The output data is transmitted directly over the SAP GUI to the front-end PC. An existing connection between the SAP GUI and the application server is needed, but an additional network connection is not required. The SAP GUI starts SAPIpd on the front-end PC and transmits the print data to it. SAPIpd then sends the data to the Windows standard printer or to another printer installed on the operating system.

### Front-end Printing (SAP GUI for HTML)

- SAP GUI for HTML

As in the SAP GUI for Windows/Java, front-end printing lets you access printers that are not defined in the R/3 spool system but configured on the front-end PC. The SAP system converts the output data into the Acrobat format PDF and then transmits the file using HTTP over the existing connection to the web browser on the front-end PC. The browser then uses the Acrobat Reader plug-in to display and print the output data.

Apart from the above two options, you can also print using:

### Local Printing

When you print locally, the spool process sends the data to a printer that is set up on the operating system on the application server. The print request is then forwarded from the spool system of the operating system to the relevant printer. You can use this option on all the three configurations of SAP GUI.

### Remote Printing

The spool process can access any printing system in the network that can handle the lpr/lpd protocol. Unix has inbuilt lpd protocol, but for Windows, SAP developed its own lpd program for PCs called SAPIpd, which is installed with the SAP frontend. You can use this option on all the three configurations of SAP GUI.

## 1.10 Conclusion

SAP GUI is SAP's global client for accessing SAP functionality and comes in the following three different configurations:

- SAP GUI for Windows
- SAP GUI for the Java Environment
- SAP GUI for HTML

Installation Options to install SAPGUI are:

- Workstation installation from a server(recommended)
- Workstation installation from a distribution medium such as a DVD

Please refer to the install guide of the SAP GUI version you are installing to check the components of SAP GUI as components get added/deleted with each new version. There are various possibilities of how an application can use Office products with SAP GUI. Please check the compatibility of Microsoft Office products with backend and front-end versions of SAP.

You can also find lifecycle information about Microsoft Office packages on Microsoft's Website at <https://support.microsoft.com/en-us/lifecycle/search/>

The platform-independent SAP spool system is responsible for the output of forms and documents.

Below lists various options for printing:

- Local Printing
- Remote printing (network)
- Front-End Printing (SAP GUI for Windows)
- Front-End Printing (SAP GUI for HTML)

For more information on SAP GUI Platform Support and Maintenance Strategy, please click the links below:

- Support Matrix for Windows:  
<https://www.sap.com/documents/2016/06/586c0458-767c-0010-82c7-eda71af511fa.html>
- Support Matrix for Java:  
<https://www.sap.com/documents/2016/06/c0d897b9-757c-0010-82c7-eda71af511fa.html>

## 1.11 About Spinnaker Support

Spinnaker Support is the leading global provider of third-party support and managed services for enterprises that run SAP. Spinnaker Support clients gain more comprehensive and responsive service, save an average of 62% on their support fees, and can remain on their current software releases indefinitely. They trust Spinnaker Support to keep their enterprise applications running at peak performance and to help them navigate from on-premise to hybrid to cloud.

Spinnaker Support operates from nine regional operations centers located in Denver, London, Moscow, Mumbai, Paris, Singapore, Seoul, Tel Aviv, and Tokyo. Our award-winning blend of services span SAP, BusinessObjects, Oracle E-Business Suite, JD Edwards, Siebel, Oracle Database, Oracle Fusion Middleware products, Hyperion, Agile PLM, ATG/Endeca, and more.

Spinnaker Support LLC  
5445 DTC Pkwy #850  
Greenwood Village CO 80111  
877-476-0576 U.S. & Canada  
+44 (0)20 8242 1785 International

[www.spinnakersupport.com](http://www.spinnakersupport.com)

SPINNAKER  
SUPPORT 